

420380

TM 11-5805-343-20P

TECHNICAL MANUAL

ORGANIZATIONAL MAINTENANCE REPAIR PARTS AND SPECIAL TOOLS LISTS

FOR

CONVERTER, TELEGRAPH-TELEPHONE SIGNAL CV-1180/G

(NSN 5805-00-889-3962)

HEADQUARTERS, DEPARTMENT OF THE ARMY

AUGUST 1977

TECHNICAL MANUAL

No. 11-5805-343-20P

HEADQUARTERS
DEPARTMENT OF THE ARMY
WASHINGTON, DC, 12 August 1977

ORGANIZATIONAL MAINTENANCE REPAIR PARTS AND SPECIAL TOOLS LISTS
FOR
CONVERTER, TELEGRAPH-TELEPHONE SIGNAL CV-1180/G
(NSN 5805-00-889-3962)

Current as of 23 May 1977

REPORTING OF ERRORS

You can improve this manual by recommending improvements using DA Form 2028-2 (Test) located in the back of the manual. Simply tear out the self-addressed form, fill it out as shown on the sample, fold it where shown, and drop it in the mail.

If there are no blank DA Form 2028-2 (Test) in the back of your manual, use the standard DA Form 2028 (Recommended Changes to Publications and Blank Forms) and forward to the Commander, US Army Electronics Command, ATTN: DRSEL-MA-Q, Fort Monmouth, NJ 07703.

In either case a reply will be furnished direct to you.

Table of Contents

	Page	illus figure
SECTION I. INTRODUCTION _____	1	
II. Repair parts list _____	5	
Group 00 Converter, Telegraph-Telephone Signal CV-1180/G		
01 Mail chassis assembly (A1) (No parts authorized)		
02 Receive module assembly (1A1) _____	5	1,2
03 Receive module assembly (1A2) _____	9	3
04 Send module assembly (1A3) _____	11	4,5
05 Send module assembly (1A4) _____	15	6
06 Ring receive module assembly (1A5) _____	17	7,9
SECTION III. Special tools list (Not applicable)		
IV. National stock number and part number index _____	22	

SECTION I.

INTRODUCTION

1. Scope

This manual lists spares and repair parts; special tools: special test, measurement, and diagnostic equipment (TMDE), and other special support equipment required for performance of organizational maintenance of the CV-1180/G. It authorizes the requisitioning and issue of spares and repair parts as indicated by the source and maintenance codes.

2. General

This Repair Parts and Special Tools List is divided into the following sections :

a. Section II. Repair Parts List. A list of spares and repair parts authorized for use in the performance of maintenance. The list *also* includes parts which must be removed for replacement of the authorized parts. Parts list are composed of functional groups in numeric sequence, with the parts in each group listed in figure and item number sequence.

b. Section III. Special Tools List. Not applicable.

c. Section IV. National Stock Number and Part Number Index. A list, in National item identification number (NIIN) sequence, of all National stock numbers (NSN) appearing in the listings, followed by a list, in alphameric sequence, of all part numbers appearing in the listings. National stock numbers and part numbers are cross-referenced to each illustration figure and item number appearance.

3. Explanation of Columns

a. Illustration. This column is divided as follows:

(1) **Figure number.** Indicates the figure number of the illustration on which the item is shown.

(2) **Item number.** The number used to identify item called out in the illustration.

b. Source, Maintenance, and Recoverability (SMR) Codes.

(1) **Source code.** Source codes indicate the manner of acquiring support items for maintenance, repair, or overhaul of end items. Source codes are entered in the first and second positions of the Uniform SMR Code format as follows :

<i>Code</i>	<i>Definition</i>
PA-Item procured and stocked for anticipated or known usage.	

XD-A support item that is not stocked. When required, item will be procured through normal supply channels.

NOTE

Cannibalization or salvage may be used as a source of supply for any items source coded above except those coded XA and aircraft support items as restricted by AR 700-42.

(2) **Maintenance code.** Maintenance codes are assigned to indicate the levels of maintenance authorized to USE and REPAIR support items. The maintenance codes are entered in the third and fourth positions of the Uniform SMR Code format as follows:

(a) The maintenance code entered in the third position will indicate the lowest maintenance level authorized to remove, replace, and use the support item. The maintenance code entered in the fourth position will indicate one of the following levels of maintenance :

<i>Code</i>	<i>Application/Explanation</i>
C-Support item is removed, replaced, used at the organizational level.	

(b) The maintenance code entered in the fourth position indicates whether the item is to be repaired and identifies the lowest maintenance level with the capability to perform complete repair (i.e., all authorized maintenance functions). This position will contain one of the following maintenance codes :

Z-Nonreparable. No repair is authorized.

(3) Recoverability code. Recoverability codes are assigned to support items to indicate the disposition action on unserviceable items. The recoverability code is entered in the fifth position of the Uniform SMR Code format as follows :

*Recoverability
coder*

Definition

Z-Nonreparable item. When unserviceable, condemn and dispose at the level indicated in position 3.

c. National Stock Number. Indicates the National stock number assigned to the item and will be used for requisitioning purposes.

d. Part Number. Indicates the primary number used by the manufacturer (individual, company, firm, corporation, or Government activity), which controls the design and characteristics of the item by means of its engineering drawings, specifications, standards, and inspection requirements to identify an item or range of items.

NOTE

When a stock numbered item is requisitioned, the repair part received may have a different part number than the part being replaced.

e. Federal Supply Code for Manufacturer (FSCM). The FSCM is a S-digit numeric code listed in SB 708-42 which is used to identify the manufacturer, distributor, or Government agency, etc.

f. Description. Indicates the Federal item name and, if required, a minimum description to identify the item.

g. Unit of Measure (V/M). Indicates the standard of the basic quantity of the listed item as used in performing the actual maintenance function. This measure is expressed by a two-character alphabetical abbreviation (e.g., ea, in, pr, etc). When the unit of measure differs from the unit of issue, the lowest unit of issue that will satisfy the required units of measure will be requisitioned.

h. Quantity Incorporated in Unit. Indicates the quantity of the item used in the breakout shown on the illustration figure which is prepared for a

functional group, subfunctional group, or an assembly.

4. Special Information

a. The following publication pertains to the CV-1180/G and its components:
TM 11-5805-343-15, Converter, Telegraph-Telephone, Signal CV-1180/G

b. The illustrations in this manual are identical to those published in TM 11-5805-343-34P. Only those parts assigned the third position SMR maintenance code "C" or "O" are listed in the tabular listing; therefore, there may be a break in the item number sequence. Only illustrations containing organizational authorized items appear in this manual.

5. How to Locate Repair Parts

a. When National stock number or part number is unknown.

(1) First. Using the table of contents, determine the functional group within which the item belongs. This is necessary since illustrations are prepared for functional groups and listings are divided into the same groups.

(2) Second. Find the illustration covering the functional group to which the item belongs.

(3) Third. Identify the item on the illustration and note the illustration figure and item number of the item.

(4) Fourth. Using the Repair Parts Listing, find the figure and item number noted on the illustration.

b. When National stock number or part number is known.

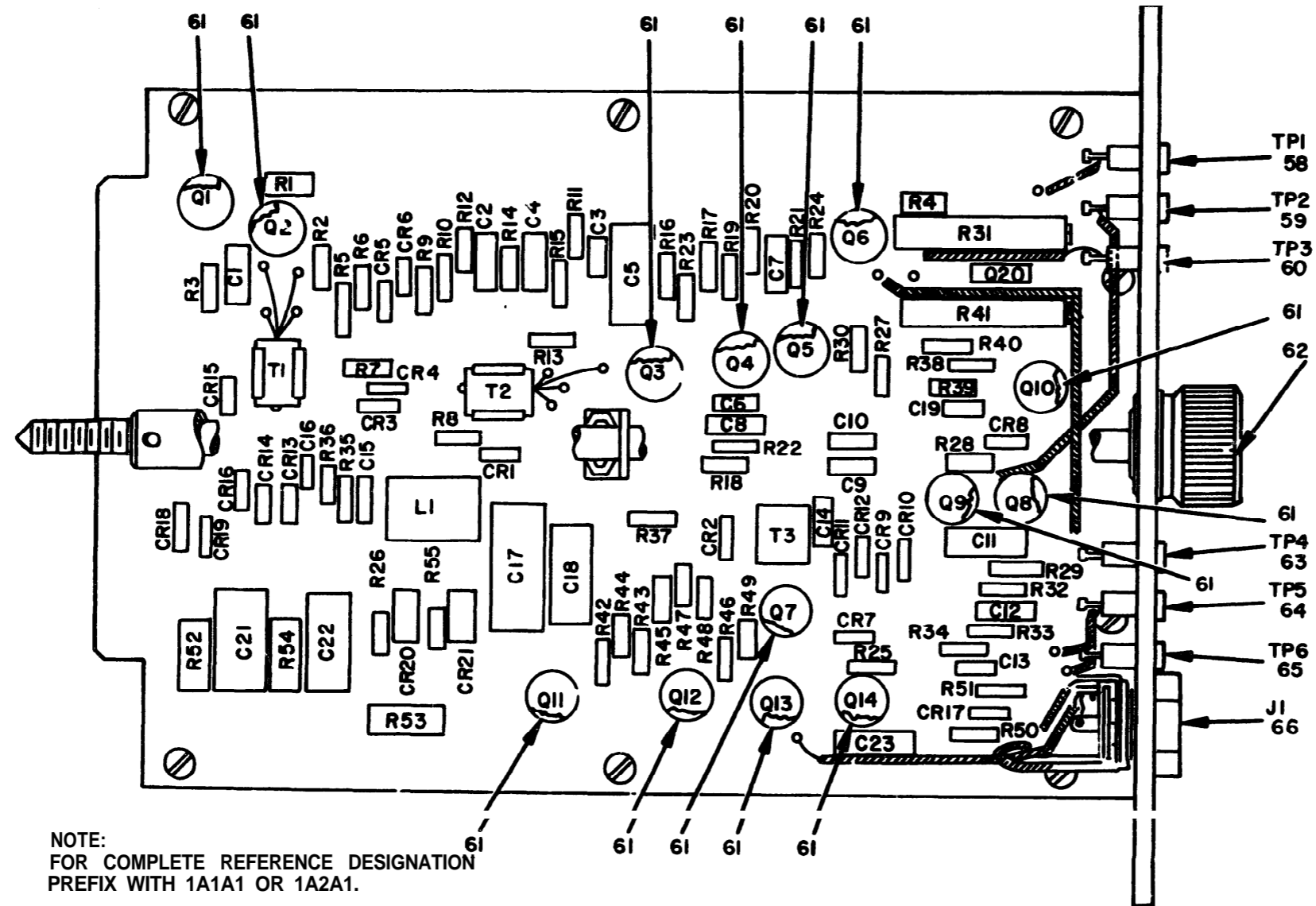
(1) First. Using the Index of National Stock Numbers and Part Numbers, find the pertinent National stock number or part number. This index is in NIIN sequence followed by a list of part numbers in alphameric sequence, cross-referenced to the illustration figure number and item number.

(2) Second. After finding the figure and item number, locate the figure and item number in the repair parts list.

6. Abbreviations

Not applicable.

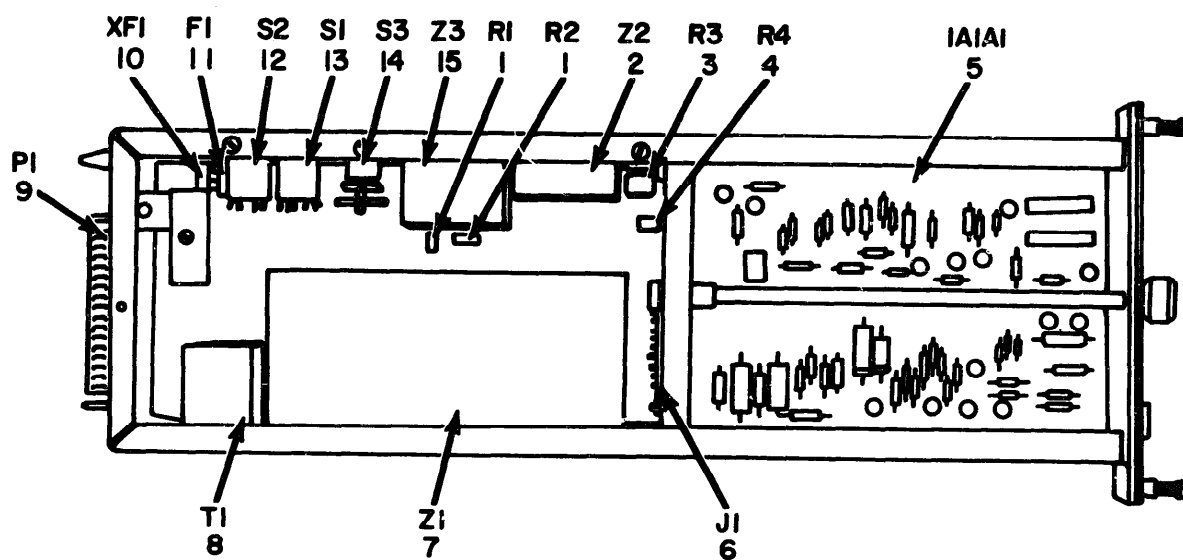
(Next printed page is 4)



NOTE:
FOR COMPLETE REFERENCE DESIGNATION
PREFIX WITH 1A1A1 OR 1A2A1.

Figure 1. Receive Module Assembly 1A1, Telegraph Receive Subassembly 1A1A1. EL2GP003

(1) ILLUSTRATION		(2)	(3)	(4)	(5)	(6)	(7)	(8)
(A) FIG NO.	(A) ITEM NO.	SMR CODE	NATIONAL STOCK NUMBER	PART NUMBER	FSCM	DESCRIPTION	USABLE ON CODE	QTY INC IN UNIT
1	6 2			1020-2-B	08730	GROUP 02 RECEIVE MODULE ASSEMBLY 1A1 KNOB	E A	1



EL26P005

Figure 2. Receive Module Assembly 1A1, Top View.

(1) ILLUSTRATION		(2)		(3)	(4)	(5)	(6)	(7)	(8)
(a) FIG NO.	(b) ITEM NO.	SMR CODE	NATIONAL STOCK NUMBER	PART NUMBER	FSCM	DESCRIPTION	USABLE ON CODE	U/M	QTY INC IN UNIT
2	11	PA0ZZ	5920-00-221-4528	F02A250V1 -16A	81349	FUSE, CARTRIDGE		E A	1

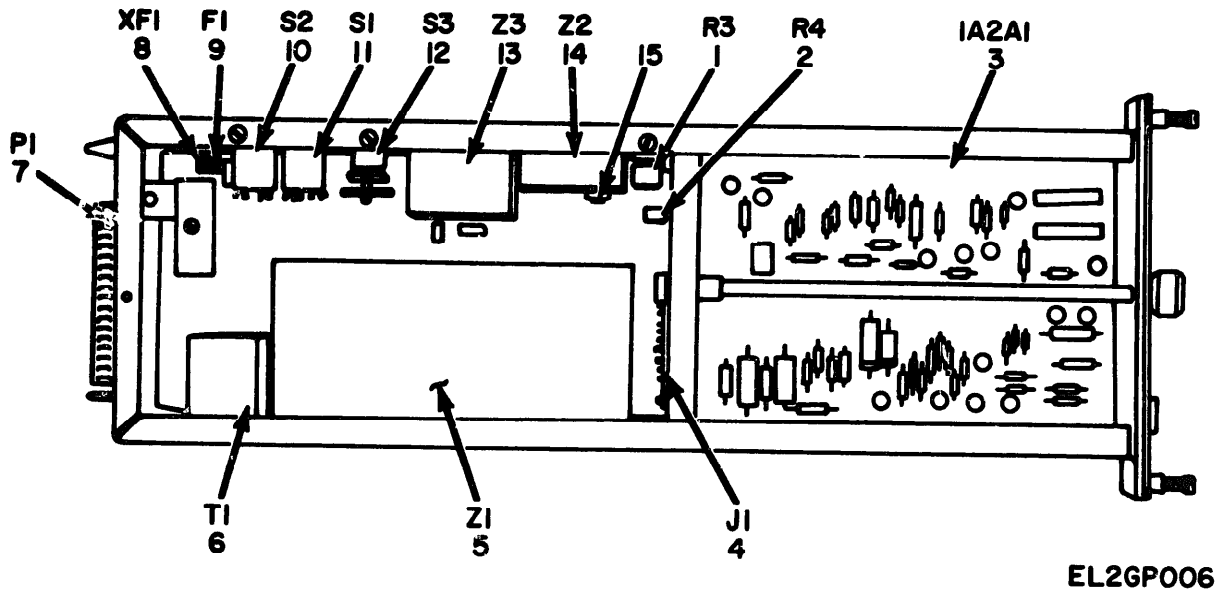


Figure 3. Receive Module Assembly 1A2.

SECTION II

TM11-5805-343-20P

(1) ILLUSTRATION		(2)	(3)	(4)	(5)	(6)	(7)	(8)
(a) FIG NO.	(b) ITEM NO.	S M R CODE	NATIONAL STOCK NUMBER	PART NUMBER	FSCM	DESCRIPTION USABLE ON CODE	J/M	QTY INC IN UNIT
3	9	PAOZZ	5920-00-221-4528	F02A50V1-16A	81439	GROUP 03 RECEIVE MODULE ASSEMBLY 1A2 FUSE, CARTRIDGE	EA	1

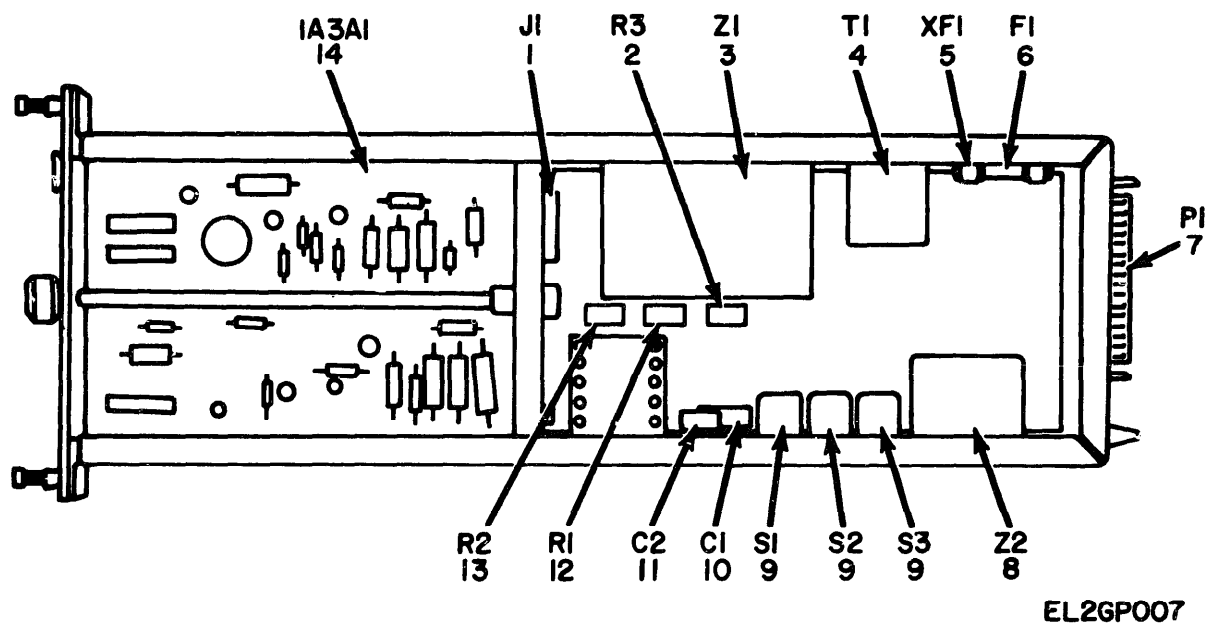


Figure 4. Send Module Assembly 1A3, Top View.

SECTION II

(1) ILLUSTRATION		(2)	(3)	(4)	(5)	(6)	(7)	(8)
(a) FIG NO.	(b) ITEM NO.	S M R CODE	NATIONAL STOCK NUMBER	PART NUMBER	FSCM	DESCRIPTION	USEBALE ON CODE U / M	QTY INC IN UNIT
4	6	PAOZZ	5920-221-4528	F02A250V1-16A	81349	GROUP 04 SEND MODULE ASSEMBLY 1A3 FUSE, CARTRIDGE	EA	1

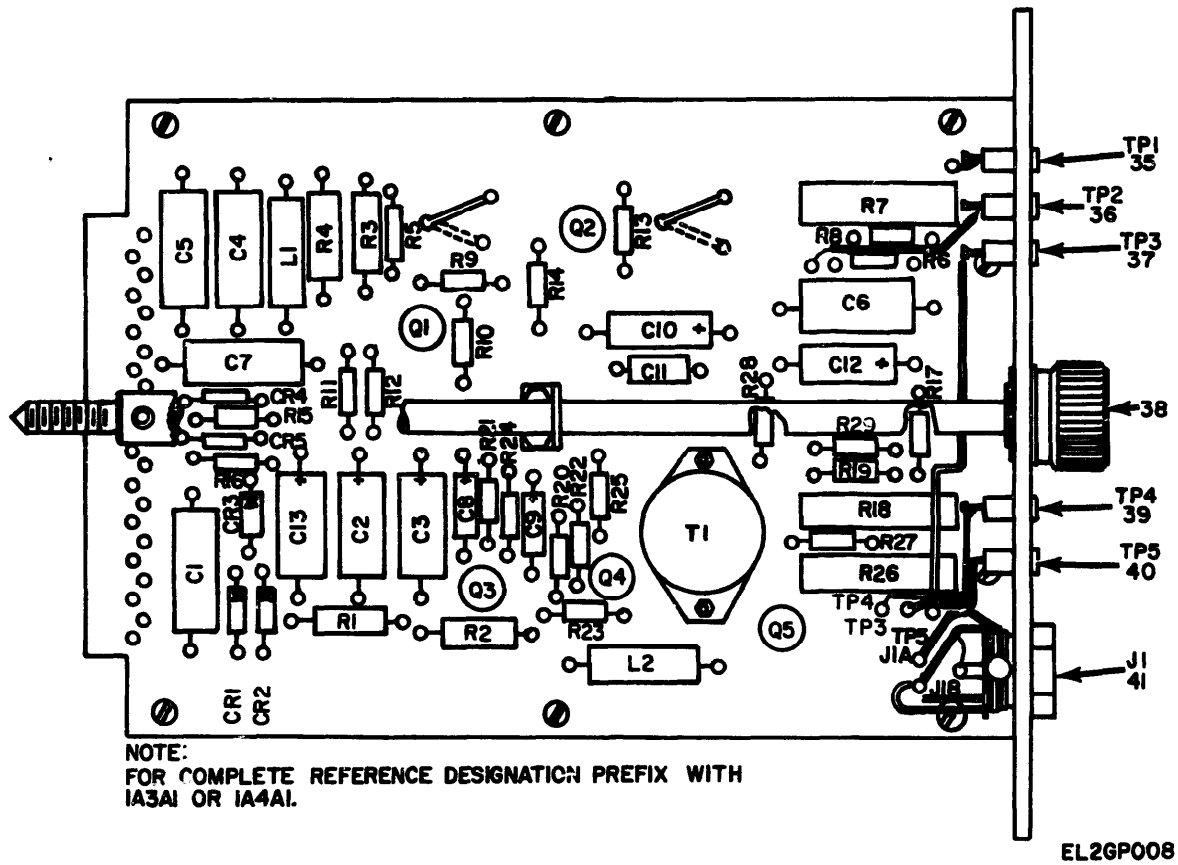


Figure 5. Send Module Assembly 1A3, Telegraph Send Subassembly 1A3A1.

SECTION II

TM11-5805-343-20P

(1) ILLUSTRATION		(2)	(3)	(4)	(5)	(6)	(7)	(8)
(a) FIG NO.	(b) ITEM NO.	S M R CODE	NATIONAL STOCK NUMBER	P A R T NUMBER	F S C M	DESCRIPTION USABLE ON CODE	J/M	QTY INC IN UNIT
5	38	XDOZZ		1020-2-B	08730	KNOB	EA	1

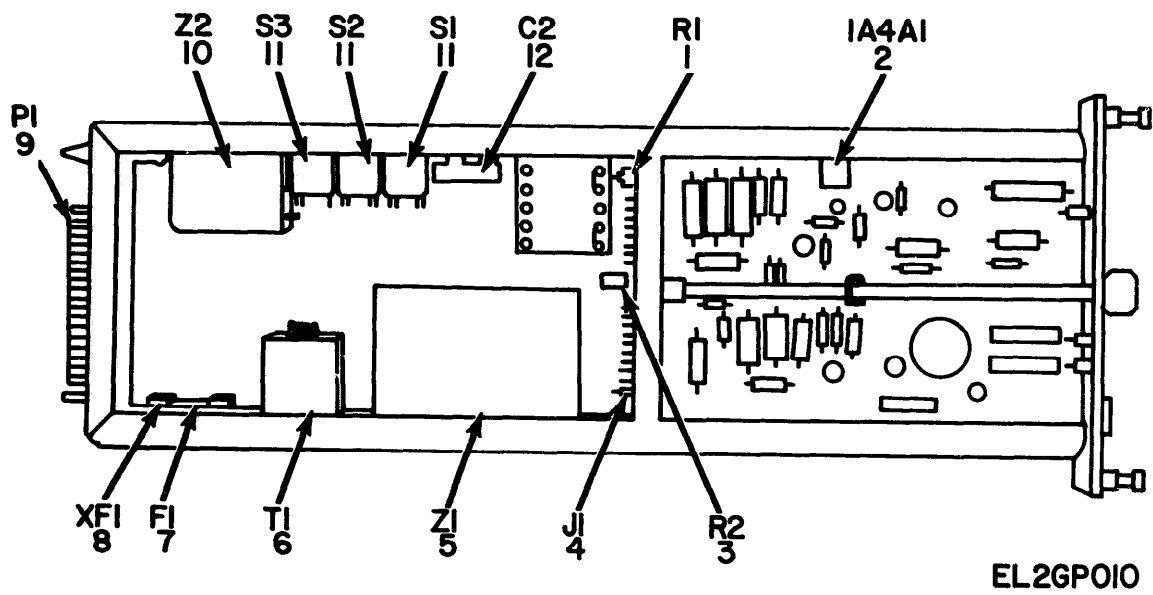


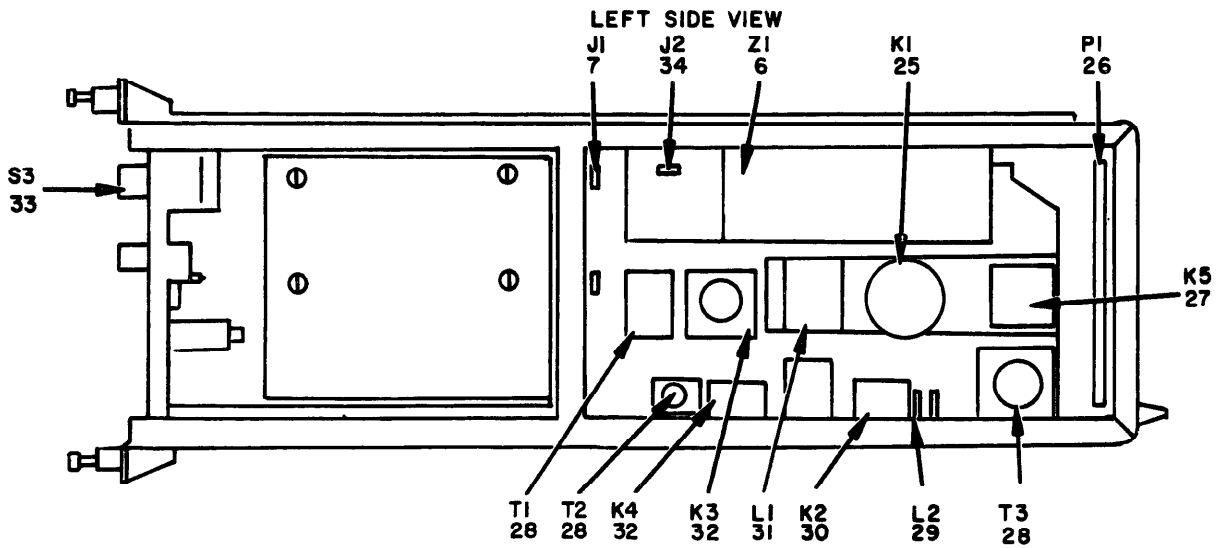
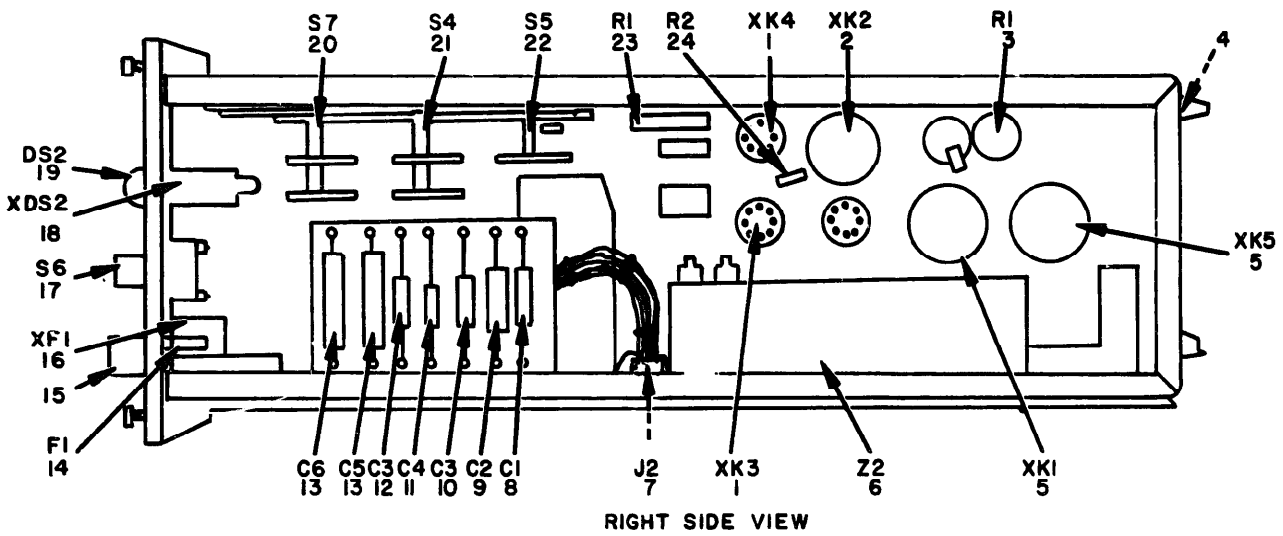
Figure 6. Send Module Assembly 1A4.

EL2GPO10

SECTION II

TM11-5805-343-20P

(1)		(2)	(3)	(4)	(5)	(6)	(7)	(8)
ILLUSTRATION		S M R CODE	NATIONAL STOCK NUMBER	PART NUMBER	FSCM	DESCRIPTION	USABLE ON CODE	QTY INC IN UNIT
(a) FIG NO.	(b) ITEM NO.							
6	7	PAOZZ	5920-00-221-4528	F02A250V1-16A	81349	GROUP 05 SEND MODULE ASSEMBLY 1A4 FUZE, CARTRIDGE	EA	1



EL26P011

Figure 7. Ring Receive Module Assembly 1A5, Right and Left Side Views.

SECTION II

TM11-5805-343-20P

(1) ILLUSTRATION		(2)	(3)	(4)	(5)	(6)	(7)	(8)
(a) FIG NO.	(b) ITEM NO.	SMR CODE	NATIONAL STOCK NUMBER	PART NUMBER	FSCM	DESCRIPTION USABLE ON CODE	U/M	QTY INC IN UNIT
						GROUP 06 RING RECEIVE MODULE ASSEMBLY 1A5		
7	14	PAOZZ	5920-00-281-0224	F02A250V1-2A5	81349	FUSE, CARTRIDGE	EA	1
7	15	XDOZZ		3420045A-2	75915	CAP, ELECTRICAL	EA	1
7	19	PAOZZ	6240-00-682-3411	NE51H	08838	LAMP, GLOW	EA	1

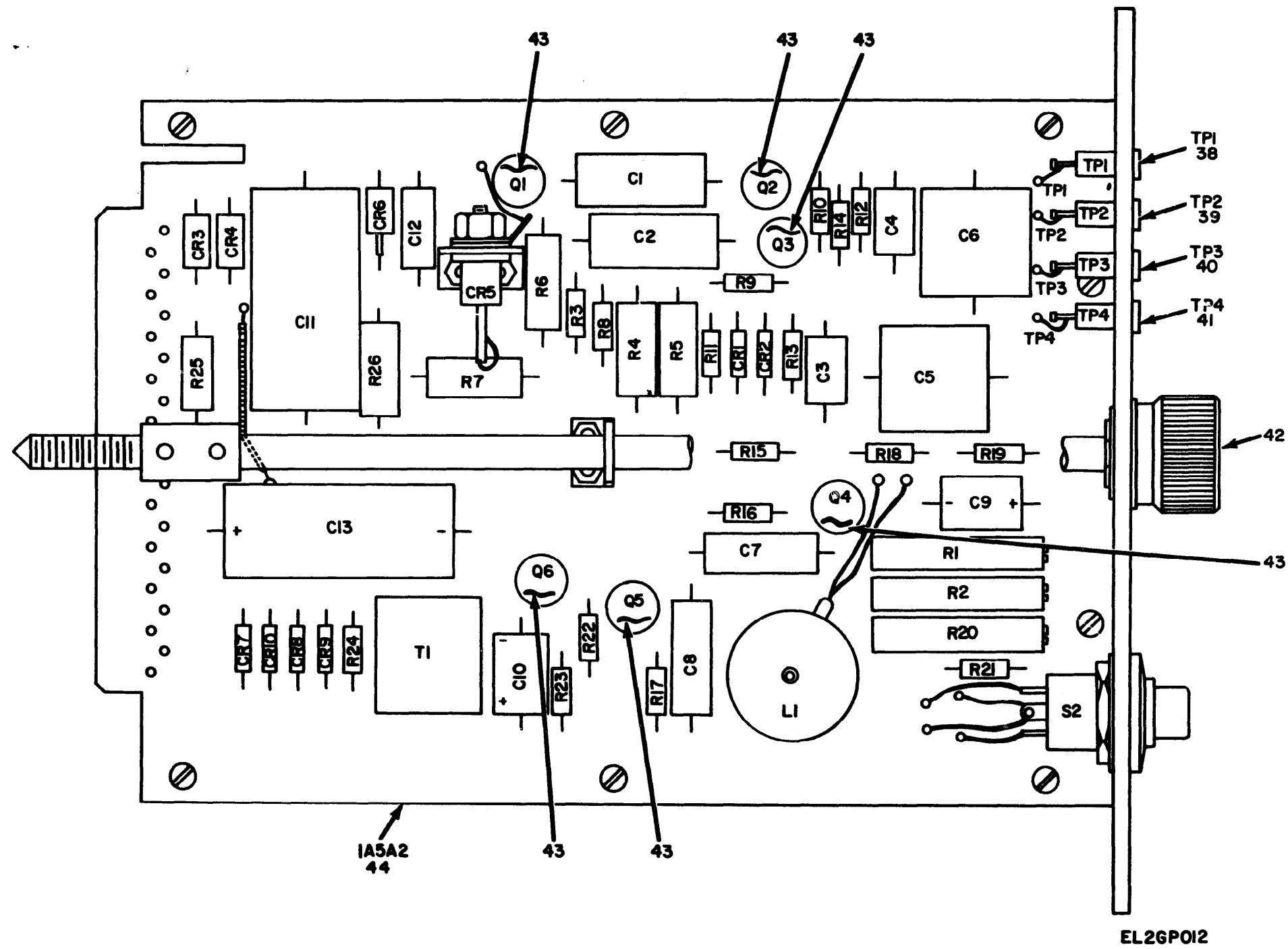


Figure 8. Ring Receive Module Assembly IA5, Ring Send Subassembly IA5A2.

SECTION II

(1) ILLUSTRATION		(2)	(3)	(4)	(5)		(6)	(7)	(9)
(a) FIG NO.	(b) ITEM NO.	SRM CODE	NATIONAL STOCK NUMBER	PART NUMBER	FSCM	USABLE ON CODE	DESCRIPTION	U/M	QTY INC IN UNIT
3	4 2	XDOZZ		1080-2-B	08730		KNOB	EA	1

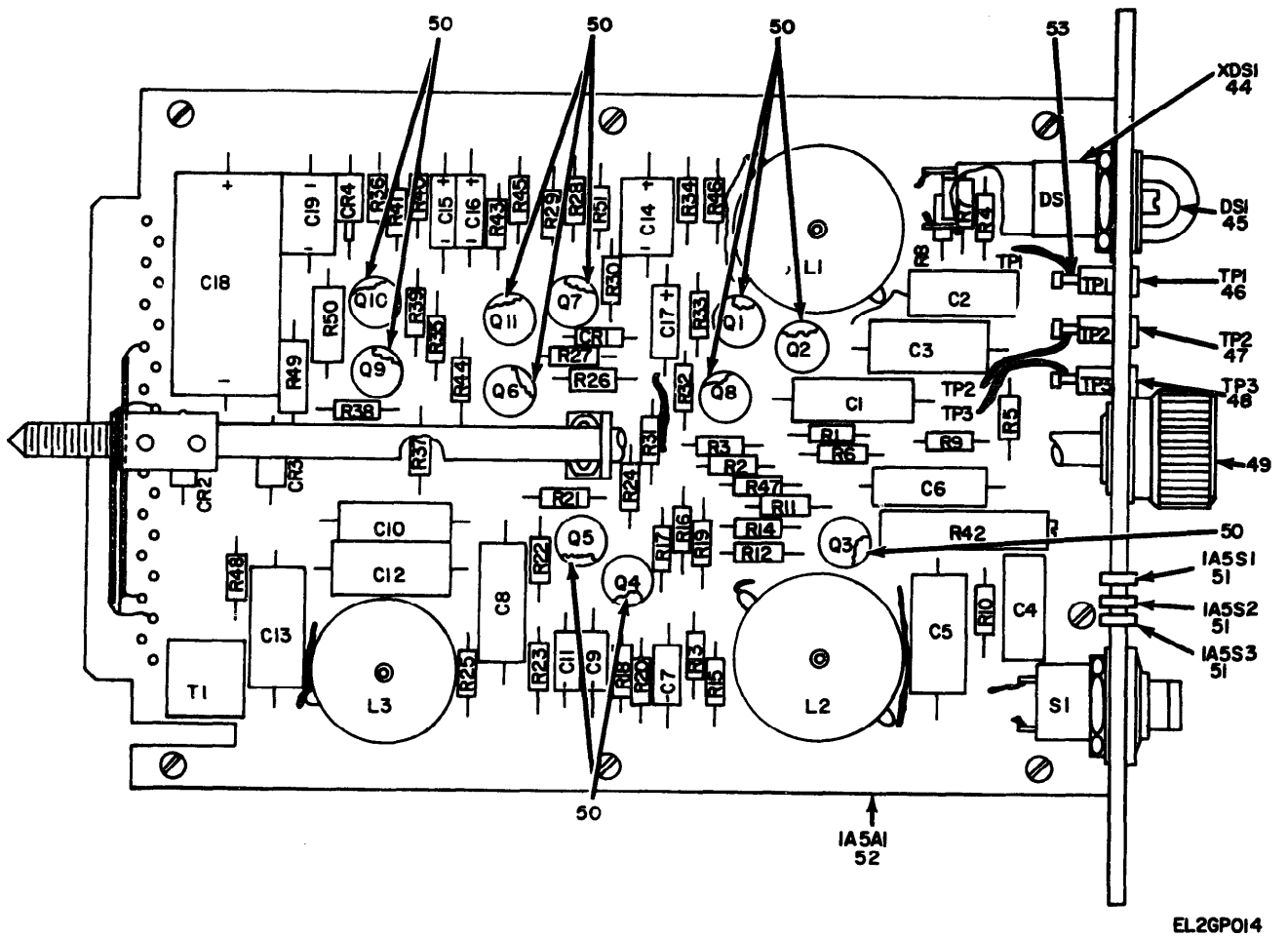


Figure 9. Ring Receive Module Assembly IA5, Ring Receive Subassembly 1A5A1.

SECTION II

TM11-5805-343-20P

(1) ILLUSTRATION		(2) SMR CODE	(3) NATIONAL STOCK NUMBER	(4) PART NUMBER	(5) FSCM	(6) DESCRIPTION USABLE ON CODE	(7) U/M	(8) QTY INC IN UNIT
(a) FIG NO.	(b) ITEM NO.							
9	4 5	PAOZZ	6240-682-3411	NE51H	08838	LAMP, GLOW	EA	1
9	4 9	XDOZZ		1020-2-B	08730	KNOB	EA	1

STOCK NUMBER	FIGURE NO.	ITEM NO.
5920-00-221-4528	2	11
5920-00-221-4528	3	9
5920100-221-4528	4	6
5920-00-221-4528	6	7
5920-00-281-0224	7	14
6240-00-682-3411	7	19
6240-00-682-3411	9	45

PART NUMBER	FSCM	FIGURE NO.	ITEM NO.
F02A250V1 - 16A	81349	2	11
F02A250V1 - 16A	81349	2	9
F02A250V1 - 16A	81349	4	6
F02A250V1 - 16A	81349	6	7
F02A250V1-2AS	81349	7	14
NE51H	08838	7	19
NE51H	08838	9	45
1020-2-B	08730	1	62
1020-2-B	Text	6	38
1020-2-B	08730	8	42
1020-2-B	08730	9	49
342004SA-2	75915	7	15

FILL IN YOUR
UNIT'S ADDRESS

FOLD BACK

DEPARTMENT OF THE ARMY

OFFICIAL BUSINESS
PENALTY FOR PRIVATE USE, \$300

POSTAGE AND FEES PAID
DEPARTMENT OF THE ARMY
DOD-314



Commander
US Army Electronics Command
ATTN: DRSEL-MA-Q
Fort Monmouth, New Jersey 07703

TEAR ALONG DOTTED LINE

FOLD BACK

REVERSE OF DA FORM 2026-2 (TEST)

RECOMMENDED CHANGES TO EQUIPMENT TECHNICAL MANUALS



SOMETHING WRONG WITH THIS MANUAL?

THEN... JOT DOWN THE DOPE ABOUT IT ON THIS FORM, TEAR IT OUT, FOLD IT AND DROP IT IN THE MAIL!

FROM: (YOUR UNIT'S COMPLETE ADDRESS)

DATE

PUBLICATION NUMBER

DATE

TITLE

BE EXACT. . . PIN-POINT WHERE IT IS

IN THIS SPACE TELL WHAT IS WRONG AND WHAT SHOULD BE DONE ABOUT IT:

PAGE NO.

PARA-GRAPH

FIGURE NO.

TABLE NO.

TEAR ALONG DOTTED LINE

TYPED NAME, GRADE OR TITLE, AND TELEPHONE NUMBER

SIGN HERE:

DA FORM 2028-2 (TEST)
1 AUG 74

P.S.--IF YOUR OUTFIT WANTS TO KNOW ABOUT YOUR MANUAL "FIND," MAKE A CARBON COPY OF THIS AND GIVE IT TO YOUR HEADQUARTERS.

RECOMMENDED CHANGES TO EQUIPMENT TECHNICAL MANUALS



SOMETHING WRONG WITH THIS MANUAL?

THEN... JOT DOWN THE DOPE ABOUT IT ON THIS FORM, TEAR IT OUT, FOLD IT AND DROP IT IN THE MAIL!

FROM: (YOUR UNIT'S COMPLETE ADDRESS)
 Commander
 Stateside Army Depot
 ATTN: AMSTA-US
 Stateside, N.J. 07703

DATE 10 July 1975

PUBLICATION NUMBER: TM 11-5840-340-12
 DATE: 23 Jan 74
 TITLE: Radar Set AN/SPC-76

BE EXACT... PIN-POINT WHERE IT IS				IN THIS SPACE TELL WHAT IS WRONG AND WHAT SHOULD BE DONE ABOUT IT:
PAGE NO.	PARA-GRAPH	FIGURE NO.	TABLE NO.	
2-25	2-28			<p>Recommend that the installation antenna alignment procedure be changed throughout to specify a 2° IFF antenna lag rather than 1°.</p> <p>REASON: Experience has shown that with only a 1° lag, the antenna servo system is too sensitive to wind gusting in excess of 27 knots, and has a tendency to rapidly accelerate and decelerate as it hunts, causing strain to the drive train. Hunting is minimized by adjusting the lag to 2° without degradation of operation.</p>
3-10	3-3		3-1	<p>Item 5, Function column. Change "2 db" to "3db."</p> <p>REASON: The adjustment procedure for the TRANS POWER FAULT indicator calls for a 3 db (500 watts) adjustment to light the TRANS POWER FAULT indicator.</p>
5-6	5-8			<p>Add new step f.1 to read, "Replace cover plate removed in step e.1, above."</p> <p>REASON: To replace the cover plate.</p>
		FO3		<p>Zone C 3. On J1-2, change "+24 VDC to "+5 VDC."</p> <p>REASON: This is the output line of the 5 VDC power supply. + 24 VDC is the input voltage.</p>

TEAR ALONG DOTTED LINE

TYPED NAME, GRADE OR TITLE, AND TELEPHONE NUMBER
 SSG I. M. DeSpirito 999-1776

SIGN HERE:
SSG I. M. DeSpirito

DA FORM 2028-2 (TEST) 1 AUG 74 P.S.--IF YOUR OUTFIT WANTS TO KNOW ABOUT YOUR MANUAL "FIND," MAKE A CARBON COPY OF THIS AND GIVE IT TO YOUR HEADQUARTERS.

HISA 1686-75

